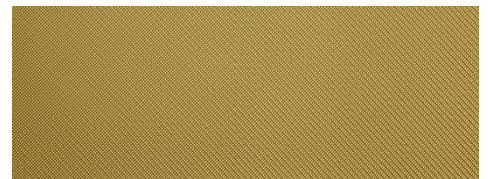


# SEFAR Architecture VISION

SEFAR Architecture VISION is a black precision fabric that can be coated with aluminum, chromium, titanium or gold and the metalized fabric side can have copper, gold or special design printed on it.



## References

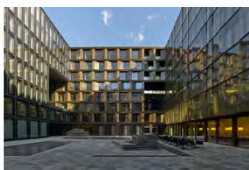
### Swiss Railway Main Office Building



The facades consist of colored, moveable glass slats which transform the visual appearance of the building as the sun moves across the sky.

- [Flyer: Swiss Railway Main Office Building \(PDF, 99 kb\)](#)
- [Additional picture material \(PDF, 591 kb\)](#)

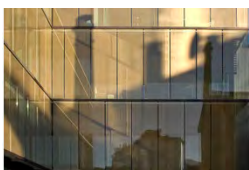
### Europaallee 21, Construction Area C



The building complex is formed from four structures grouped together around an open courtyard in the shape of a windmill sail. Each building was designed by a different architect so is therefore different in appearance.

- [Flyer: Europaallee, Construction Area C \(PDF, 123 kb\)](#)
- [Additional picture material \(PDF, 1126 kb\)](#)

### C Quadro, Executive Building



The ultra-modern, elegant «C Quadro Executive Building» lends a new sparkle and gives a new face to the district where it's located.

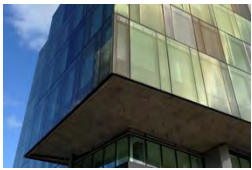
The facade laminated with the SEFAR VISION fabric subtly picks up on the set piece – the familiar silhouette – and deliberately mirrors the characteristically irregular city skyline.

- [Flyer: C Quadro, Executive Building \(PDF, 88 kb\)](#)
- [Additional picture material \(PDF, 446 kb\)](#)

### Suurstoffi Offices, Rotkreuz

## DOWNLOADS

- [Brochure: SEFAR Architecture VISION \(PDF 602 kb\)](#)
- [Technical Guidelines: SEFAR Architecture VISION \(PDF 44 kb\)](#)
- [EMPA Test Report \(PDF 4868 kb\)](#)



Novartis Corporation's new Swiss Headquarters at 'Suurstoffi' Rotkreuz is fitted with different colored SEFAR VISION fabric.

- [Flyer: Suurstoffi Offices \(PDF, 58 kb\)](#)
- [Additional picture material \(PDF, 514 kb\)](#)

### ➤ Additional References for SEFAR Architecture VISION (01 – 10)

You can see further references on the page 'Interior, Exterior and Systems'.

## Product Information



SEFAR Architecture VISION is laminated in glass when used in façade elements, whereas in double glazing it is stretched between two panes and fastened to the frame. If only the exterior surface is coated, the view in from outside is reduced and the fabric is also given outstanding energy-transmission reduction values. The rear surface (the side facing inwards) of the fabric is black and therefore neutral in color. From inside and from further away than 3 m the fabric cannot be seen.

In addition to its aesthetic features, SEFAR Architecture VISION also reduces the incidence of birds flying into the glass. Furthermore, for indoor applications SEFAR Architecture VISION can also be laminated in plastics materials or used to create textile surfaces having a very special and unique look.

### Viewing the fabric from in- and outside

How the outer surface of the metallized fabric looks depends on how the light is reflected from it, whereas the black inner surface has little optical effect and so does not hinder the view to the outside.

## Fabric range Aluminum

Provides your glass with unique textile patterns. The laminated glass encloses a fabric aluminum-coated on one side that reduces the view in from outside and also gives it outstanding energy-transmission reduction values. The back (the side facing inwards) of the fabric is black and therefore neutral in color. The shimmering

silvered front panel can have a digitally-printed design as specified by the customer – the possibilities are almost limitless.

**SEFAR Architecture VISION AL 140/25**

Wire diameter: 0.14 mm  
 Mesh aperture: 25%  
 Structure: plain weave  
 g-value: 32.8%  
 Light transmission Tv: 19.7%

**SEFAR Architecture VISION AL 140/50**

Wire diameter: 0.14 mm  
 Mesh aperture: 50%  
 Structure: plain weave  
 g-value: 50.7%  
 Light transmission Tv: 44.7%

**SEFAR Architecture VISION AL 140/70**

Wire diameter: 0.14 mm  
 Mesh aperture: 70%  
 Structure: plain weave  
 g-value: 61.6%  
 Light transmission Tv: 61.8%

**SEFAR Architecture VISION AL 260/25**

Wire diameter: 0.26 mm  
 Mesh aperture: 25%  
 Structure: twill weave  
 g-value: 61.6%  
 Light transmission Tv: 61.8%

**SEFAR Architecture VISION AL 260/50**

Wire diameter: 0.26 mm  
 Mesh aperture: 50%  
 Structure: plain weave  
 g-value: –  
 Light transmission Tv: –

**SEFAR Architecture VISION AL 260/55**

Wire diameter: 0.26 mm  
 Mesh aperture: 55%  
 Structure: plain weave

g-value: 61.6%  
Light transmission Tv: 61.8%

### Fabric range Chrome

The chromium layer on one side of the fabric gives it a unique surface. The laminated glass encloses a fabric chromium-coated on one side that reduces the view in from outside and also gives it outstanding energy-transmission reduction values. The back of the fabric (the side facing inwards) is black and therefore neutral in color. The chromium-coated front panel can have a digitally-printed design as specified by the customer – the possibilities are almost limitless.

**Metal coating: Chrome, single-sided – Width: 158 cm**

#### SEFAR Architecture VISION CR 140/25

Wire diameter: 0.14 mm  
Mesh aperture: 25%  
Structure: plain weave  
g-value: 35.7%  
Light transmission Tv: 19.0%

#### SEFAR Architecture VISION CR 140/50

Wire diameter: 0.14 mm  
Mesh aperture: 50%  
Structure: plain weave  
g-value: 52.2%  
Light transmission Tv: 44.4%

#### SEFAR Architecture VISION CR 140/70

Wire diameter: 0.14 mm  
Mesh aperture: 70%  
Structure: plain weave  
g-value: 61.7%  
Light transmission Tv: 60.0%

#### SEFAR Architecture VISION CR 260/25

Wire diameter: 0.26 mm  
 Mesh aperture: 25%  
 Structure: twill weave  
 g-value: 32.3%  
 Light transmission Tv: 20.8%

**SEFAR Architecture VISION CR 260/50**

Wire diameter: 0.26 mm  
 Mesh aperture: 50%  
 Structure: plain weave  
 g-value: –  
 Light transmission Tv: –

**SEFAR Architecture VISION CR 260/55**

Wire diameter: 0.26 mm  
 Mesh aperture: 55%  
 Structure: plain weave  
 g-value: 54.8%  
 Light transmission Tv: 49.1%

**Fabric range Titanium**

The one-sided, dark titanium coating gives the fabric a unique, technical looking surface. Laminating this fabric in the glass with the titanium-coated surface on one side reduces the view in from outside and also gives it outstanding energy-transmission reduction values. The back of the fabric (the side facing inwards) is black and therefore neutral in color. The metalized front panel can have a digitally-printed design as specified by the customer – the possibilities are almost limitless.

**Metal coating: Titanium, single-sided – Width: 158 cm**

**SEFAR Architecture VISION TI 140/25**

Wire diameter: 0.14 mm  
 Mesh aperture: 25%  
 Structure: plain weave  
 g-value: 36.5%  
 Light transmission Tv: 19.7%

**SEFAR Architecture VISION TI 140/50**

Wire diameter: 0.14 mm  
 Mesh aperture: 50%  
 Structure: plain weave  
 g-value: 52.1%  
 Light transmission Tv: 44.0%

**SEFAR Architecture VISION TI 140/70**

Wire diameter: 0.14 mm  
 Mesh aperture: 70%  
 Structure: plain weave  
 g-value: 63.3%  
 Light transmission Tv: 61.5%

**SEFAR Architecture VISION TI 260/25**

Wire diameter: 0.26 mm  
 Mesh aperture: 25%  
 Structure: twill weave  
 g-value: 33.0%  
 Light transmission Tv: 18.7%

**SEFAR Architecture VISION TI 260/50**

Wire diameter: 0.26 mm  
 Mesh aperture: 50%  
 Structure: plain weave  
 g-value: –  
 Light transmission Tv: –

**SEFAR Architecture VISION TI 260/55**

Wire diameter: 0.26 mm  
 Mesh aperture: 55%  
 Structure: plain weave  
 g-value: 55.1%  
 Light transmission Tv: 48.9%

**Fabric range Gold**

Provides your glass with unique textile patterns. The laminated glass encloses a fabric gold-coated on one side that reduces the view in from outside and also gives it outstanding energy-transmission reduction values.

The back of the fabric (the side facing inwards) is black and therefore neutral in color. The bright golden-yellow front panel can have a digitally-printed design as specified by the customer – the possibilities are almost limitless. Gold will enchant you!

**Metal coating: Gold, single-sided – Width: 158 cm**

**SEFAR Architecture VISION AU 140/25**

Wire diameter: 0.14 mm  
 Mesh aperture: 25%  
 Structure: plain weave  
 g-value: on request  
 Light transmission Tv: on request

**SEFAR Architecture VISION AU 140/50**

Wire diameter: 0.14 mm  
 Mesh aperture: 50%  
 Structure: plain weave  
 g-value: on request  
 Light transmission Tv: on request

**SEFAR Architecture VISION AU 140/70**

Wire diameter: 0.14 mm  
 Mesh aperture: 70%  
 Structure: plain weave  
 g-value: on request  
 Light transmission Tv: on request

**SEFAR Architecture VISION AU 260/25**

Wire diameter: 0.26 mm  
 Mesh aperture: 25%  
 Structure: twill weave  
 g-value: on request  
 Light transmission Tv: on request

**SEFAR Architecture VISION AU 260/50**

Wire diameter: 0.26 mm  
 Mesh aperture: 50%  
 Structure: plain weave  
 g-value: –  
 Light transmission Tv: –

**SEFAR Architecture VISION AU 260/55**

Wire diameter: 0.26 mm  
 Mesh aperture: 55%  
 Structure: plain weave  
 g-value: on request  
 Light transmission Tv: on request

**Fabric range PR Copper**

Provides your glass with unique textile patterns and a copper-colored, warm touch.

The laminated glass encloses a fabric copper-printed on one side that reduces the view in from outside and also gives it outstanding energy-transmission reduction values. The back of the fabric (the side facing inwards) is black and therefore neutral in color.

**Metal coating: PR Copper, single-sided – Width: 158 cm**

**SEFAR Architecture VISION PR 140/25 Copper**

Wire diameter: 0.14 mm  
 Mesh aperture: 25%  
 Structure: plain weave  
 g-value: 33.8%  
 Light transmission Tv: 19.0%

**SEFAR Architecture VISION PR 140/50 Copper**

Wire diameter: 0.14 mm  
 Mesh aperture: 50%  
 Structure: plain weave  
 g-value: 49.6%  
 Light transmission Tv: 42.6%

**SEFAR Architecture VISION PR 140/70 Copper**

Wire diameter: 0.14 mm  
 Mesh aperture: 70%  
 Structure: plain weave  
 g-value: 61.7%



---

Light transmission Tv: 60.0%

**SEFAR Architecture VISION PR 260/25 Copper**

Wire diameter: 0.26 mm  
Mesh aperture: 25%  
Structure: twill weave  
g-value: 32.3%  
Light transmission Tv: 20.8%

**SEFAR Architecture VISION PR 260/50 Copper**

Wire diameter: 0.26 mm  
Mesh aperture: 50%  
Structure: plain weave  
g-value: –  
Light transmission Tv: –

**SEFAR Architecture VISION PR 260/55 Copper**

Wire diameter: 0.26 mm  
Mesh aperture: 55%  
Structure: plain weave  
g-value: 52.4%  
Light transmission Tv: 46.2%

**Fabric range PR Gold**

Provides your glass with unique textile patterns. The laminated glass encloses a fabric gold-printed on one side that reduces the view in from outside and also gives it outstanding energy-transmission reduction values. The back of the fabric (the side facing inwards) is black and therefore neutral in color.

---

**Metal coating: PR Gold, single-sided – Width: 158 cm**

**SEFAR Architecture VISION PR 140/25 Gold**

Wire diameter: 0.14 mm  
Mesh aperture: 25%  
Structure: plain weave  
g-value: 32.8%  
Light transmission Tv: 19.7%

**SEFAR Architecture VISION PR 140/50 Gold**

Wire diameter: 0.14 mm  
 Mesh aperture: 50%  
 Structure: plain weave  
 g-value: 51.0%  
 Light transmission Tv: 43.0%

**SEFAR Architecture VISION PR 140/70 Gold**

Wire diameter: 0.14 mm  
 Mesh aperture: 70%  
 Structure: plain weave  
 g-value: 61.7%  
 Light transmission Tv: 60.0%

**SEFAR Architecture VISION PR 260/25 Gold**

Wire diameter: 0.26 mm  
 Mesh aperture: 25%  
 Structure: twill weave  
 g-value: 33.3%  
 Light transmission Tv: 19.9%

**SEFAR Architecture VISION PR 260/50 Gold**

Wire diameter: 0.26 mm  
 Mesh aperture: 50%  
 Structure: plain weave  
 g-value: –  
 Light transmission Tv: –

**SEFAR Architecture VISION PR 260/55 Gold**

Wire diameter: 0.26 mm  
 Mesh aperture: 55%  
 Structure: plain weave  
 g-value: 54.5%  
 Light transmission Tv: 48.7%



**Most innovative glass product**

SEFAR Architecture VISION is noted as most innovative glass product by the 'Glass Magazine' in 2014.

- [List of winners...](#)
- [Awarded SEFAR VISION project...](#)



MaterialPREIS2013

### Sefar achieves design award by Raumprobe

SEFAR Architecture VISION is in the category 'Design' among the winners of the material award 2013 by RaumPROBE.

More

...



### Sefar achieves iF product design award

Sefar has registered the Vision fabric for the famous iF product design award and has been assigned. An international jury has awarded this product.

More

...