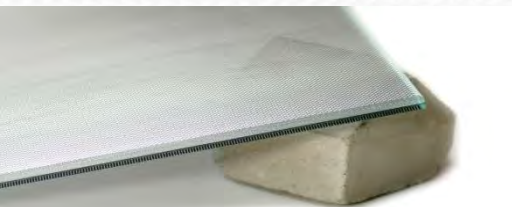


# Projects with SEFAR® Architecture VISION

*Some realized projects*



# Cquadro Udine (IT) 2010 “Total 2000m2”

*Façade: Studio Guerini* AL260/55 + PR260/55 Gold



**S E F A R**

■ ■ ■ ■



# Cquadro Udine (IT) 2010 “Total 2000m2”

*Façade: Studio Guerini* AL260/55 + PR260/55 Gold



**S E F A R**

■ ■ ■ ■

# Cquadro Udine (IT) 2010 “Total 2000m2”

*Façade: Studio Guerini* AL260/55 + PR260/55 Gold



**S E F A R**  
■ ■ ■ ■

# House of Fashion Madrid (ES) 2010 “Total 1600m2”

*Façade: RAFAEL DE LA-HOZ* AL260/50

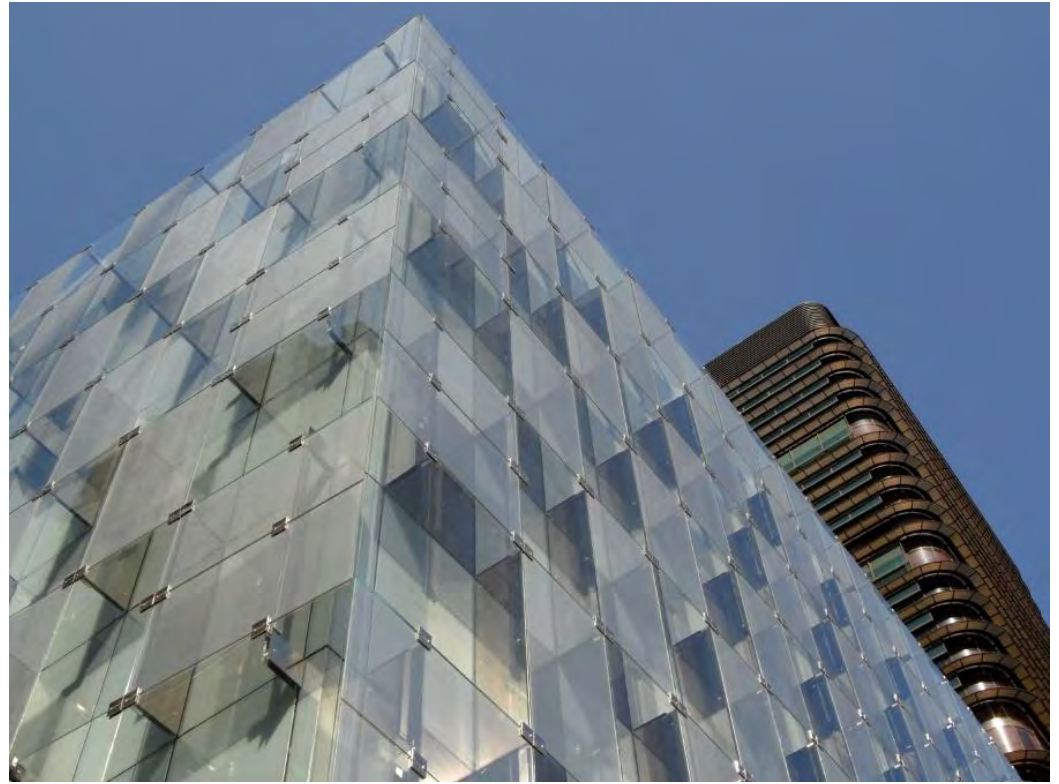


**S E F A R**  
■ ■ ■ ■



# House of Fashion Madrid (ES) 2010 “Total 1600m2”

*Façade: RAFAEL DE LA-HOZ* AL260/50



**S E F A R**

■ ■ ■ ■

# House of Fashion Madrid (ES) 2010 “Total 1600m2”

*Façade: RAFAEL DE LA-HOZ* AL260/50



**S E F A R**  
■ ■ ■ ■



# Design Festival London (UK) 2011

*David Chipperfield*



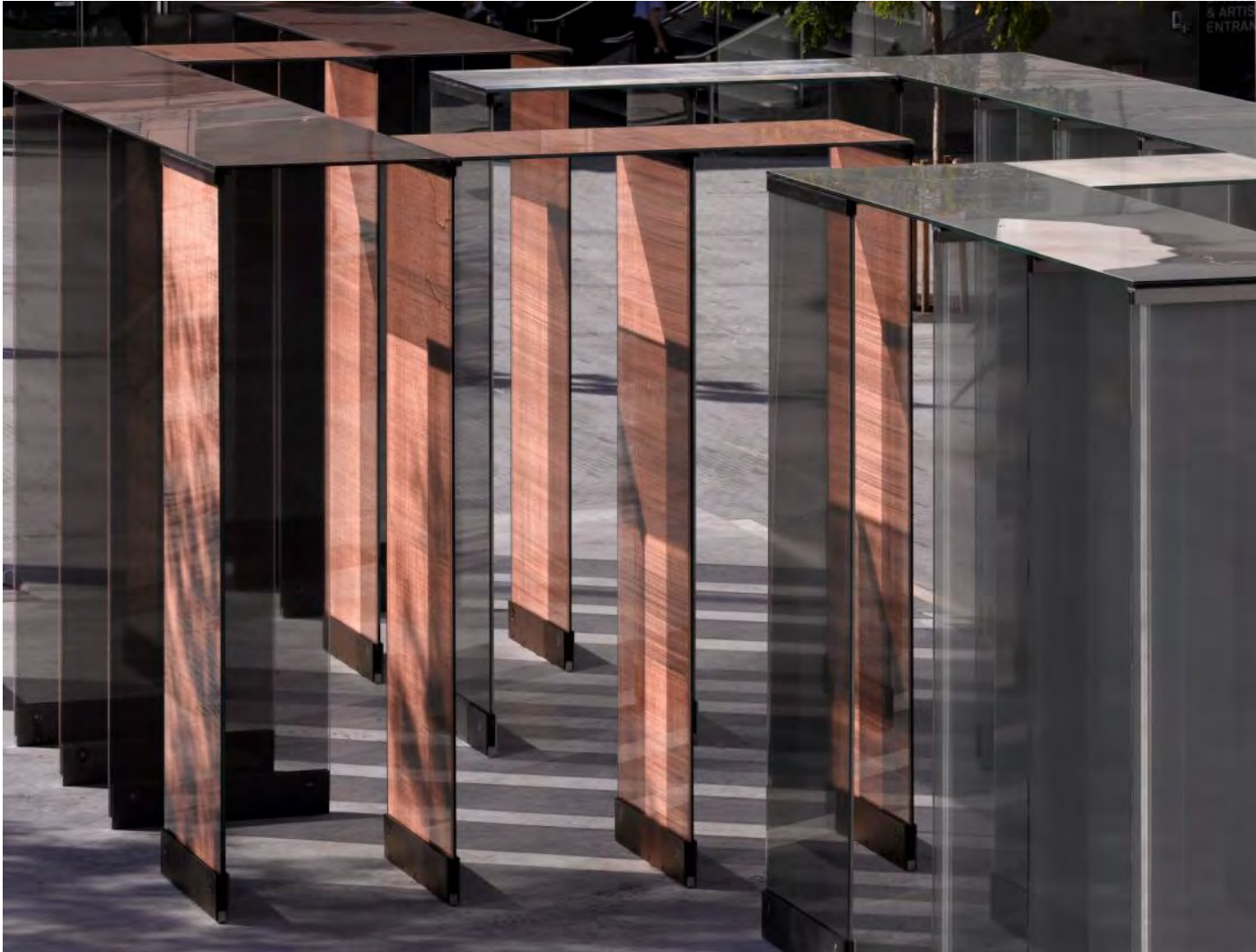
**S E F A R**

■ ■ ■ ■



# Design Festival London (UK) 2011

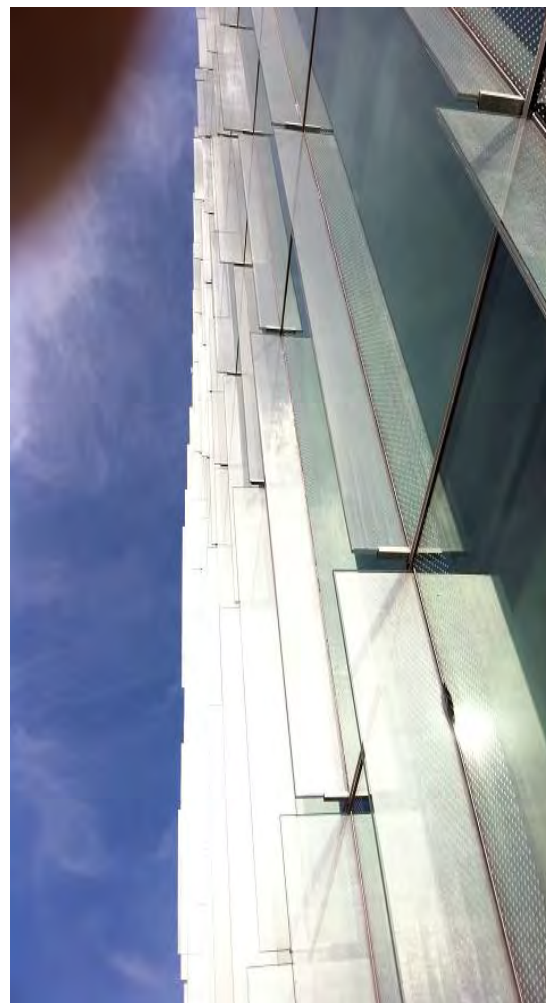
*David Chipperfield*



**S E F A R**  
■ ■ ■ ■

# Regents Place London (UK) 2012 “Total 1500m2”

*Shading fins: Wilkingson Eyre Architects* AL260/50B



**S E F A R**





# Shilpost Zurich (CH) 2012 “Total 6500m2”

*Façade: Gigon / Guyer* PR140/70 Gold



**S E F A R**



# Shilpost Zurich (CH) 2012 “Total 6500m2”

*Façade: Gigon / Guyer* PR140/70 Gold



**S E F A R**

■ ■ ■ ■



# Shilpost Zurich (CH) 2012 “Total 6500m2”

*Façade: David Chipperfield* PR260/31 Gold, PR260/55 Gold



**S E F A R**



# Shilpost Zurich (CH) 2012 “Total 6500m2”

*Interior: David Chipperfield*



**S E F A R**





# Würth Rorschach (CH) 2012 “Total 8000m2”

*Façade: Gigon / Guyer* AL140/70



**S E F A R**

■ ■ ■ ■

# Würth Rorschach (CH) 2012 “Total 8000m2”

*Façade: Gigon / Guyer* AL140/70



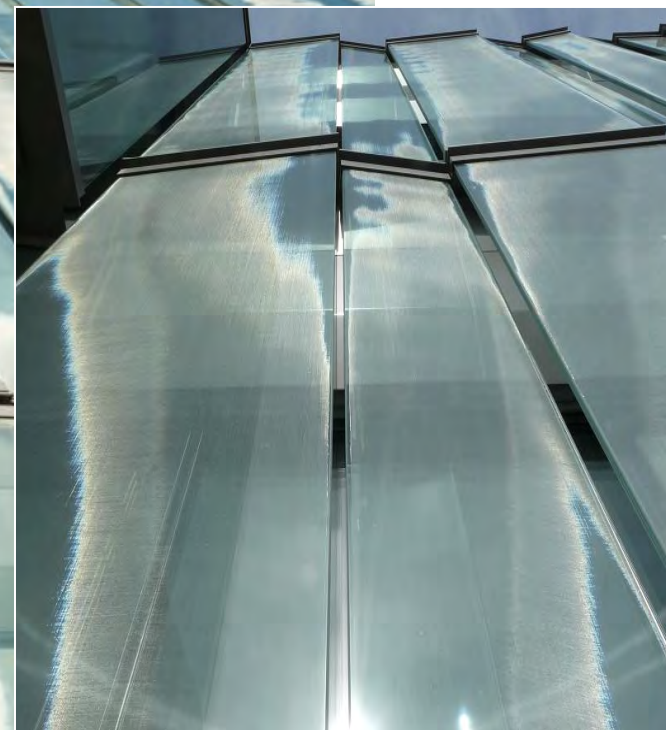
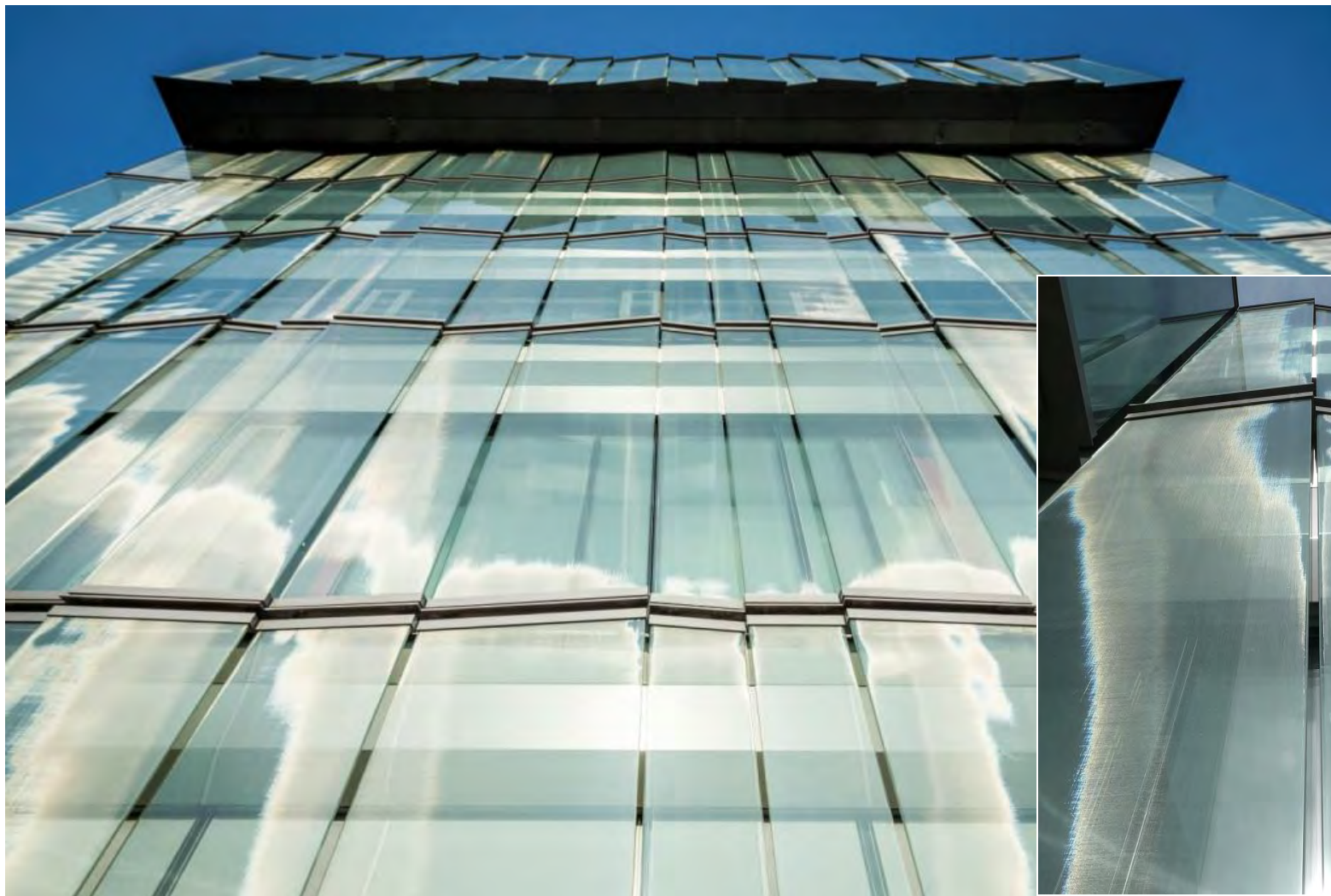
**S E F A R**

■ ■ ■ ■



# Würth Rorschach (CH) 2012 “Total 8000m2”

*Façade: Gigon / Guyer* AL140/70



**S E F A R**



# Suurstoffi Rotkreuz (CH) 2012 “Total 4500m2”

*Façade: Holzer + Kobler Architekturen* PR140/70 4 colors

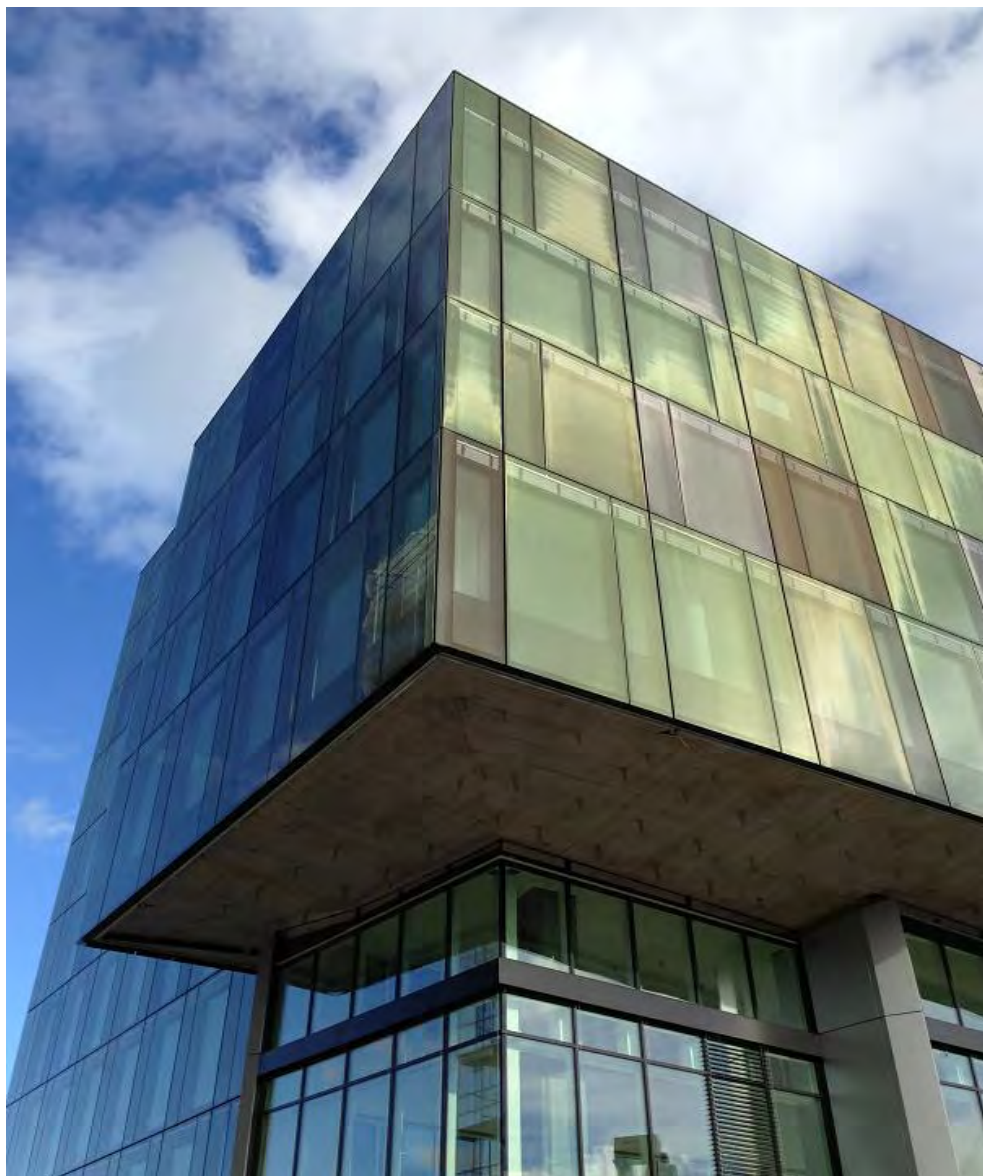


**S E F A R**  
■ ■ ■ ■



# Suurstoffi Rotkreuz (CH) 2012 “Total 4500m2”

*Façade: Holzer + Kobler Architekturen* PR140/70 4 colors



**S E F A R**

■ ■ ■ ■

# Suurstoffi Rotkreuz (CH) 2012 “Total 4500m2”

*Façade: Holzer + Kobler Architekturen* PR140/70 4 colors



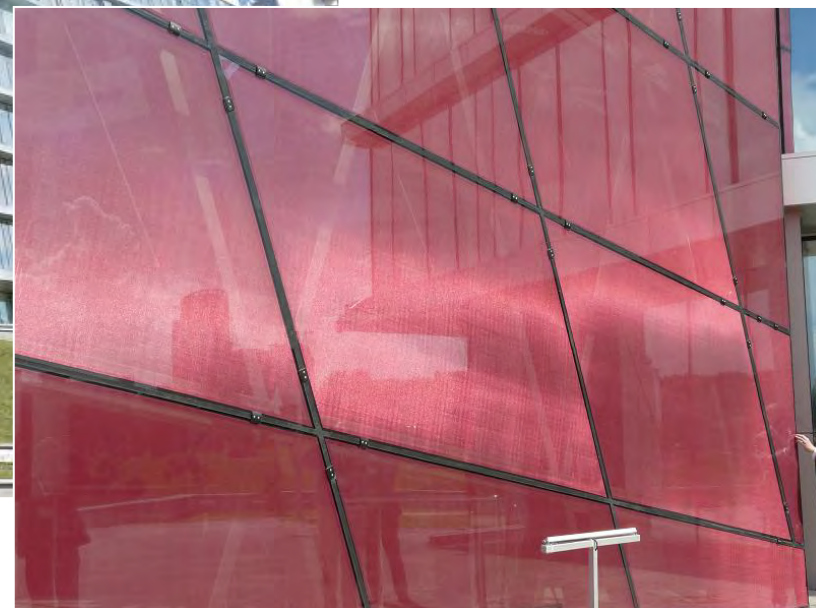
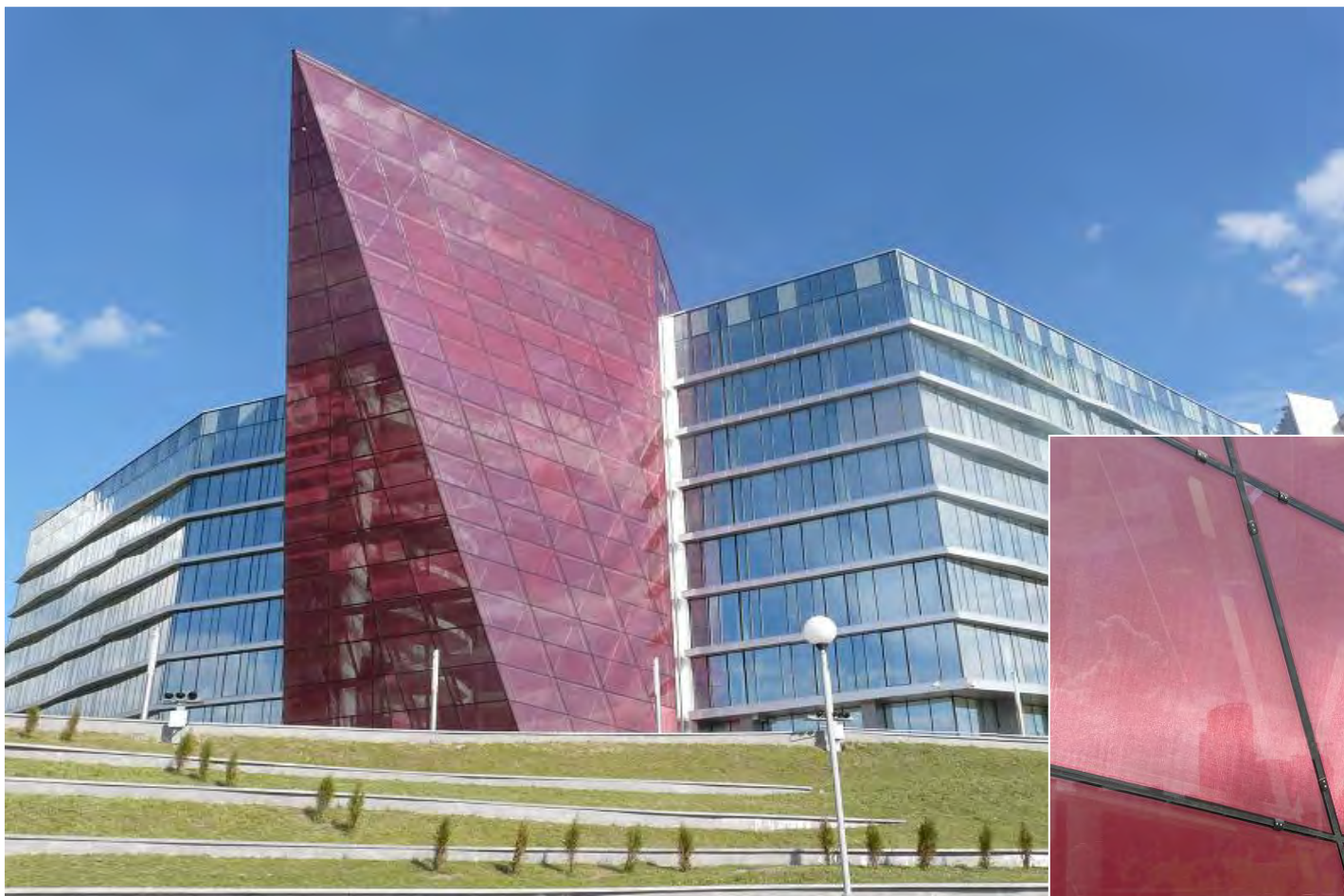
**S E F A R**





# BKK Minsk (BY) 2012 “Total 3000m2”

*Façade: Varabyeu Partners* PR260/55 Red



**S E F A R**



# BKK Minsk (BY) 2012 “Total 3000m2”

*Façade: Varabyeu Partners* PR260/55 Red



**S E F A R**  
■ ■ ■ ■



# BKK Minsk (BY) 2012 “Total 3000m2”

*Façade: Varabyeu Partners* PR260/55 Red



**S E F A R**





# BKK Minsk (BY) 2012 “Total 3000m2”

*Façade: Varabyeu Partners* PR260/55 Red



**S E F A R**





# BKK Minsk (BY) 2012 “Total 3000m2”

*Façade: Varabyeu Partners* PR260/55 Red

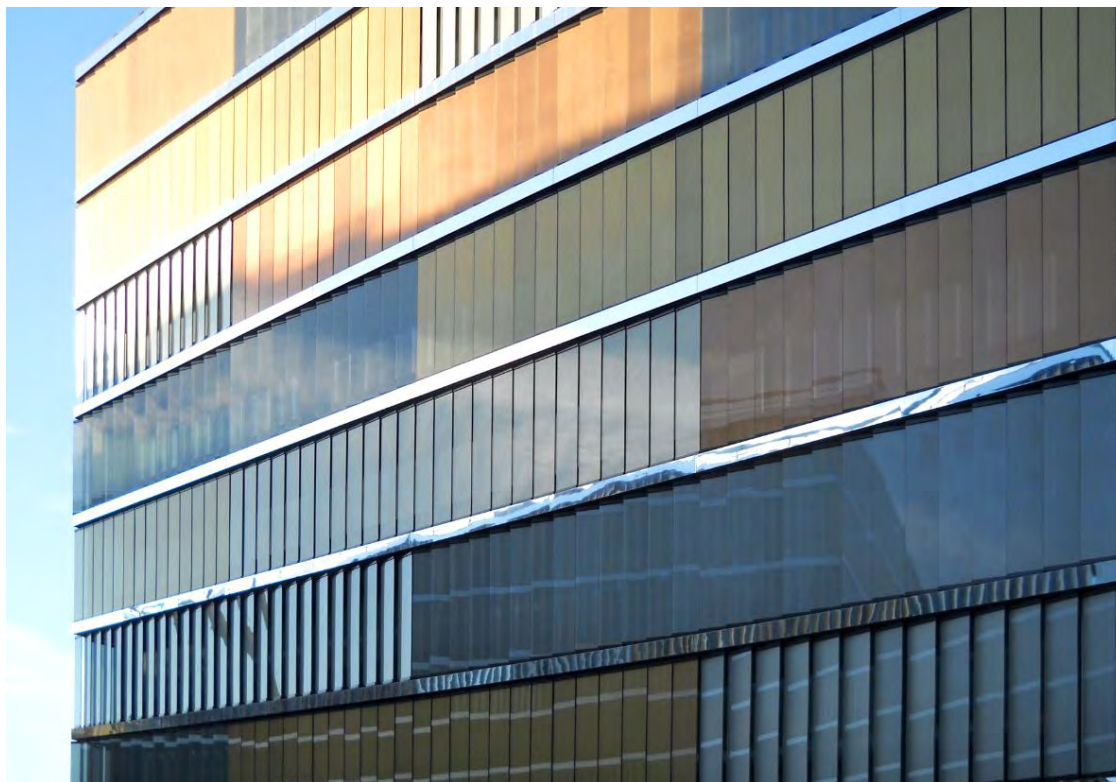


S E F A R



# SBB Wankdorf (CH) 2013/14 “Total 9500m2”

***Façade: Lussi + Halter*** AL260/25, CR260/25, PR260/25 Copper, Gold, Pearl

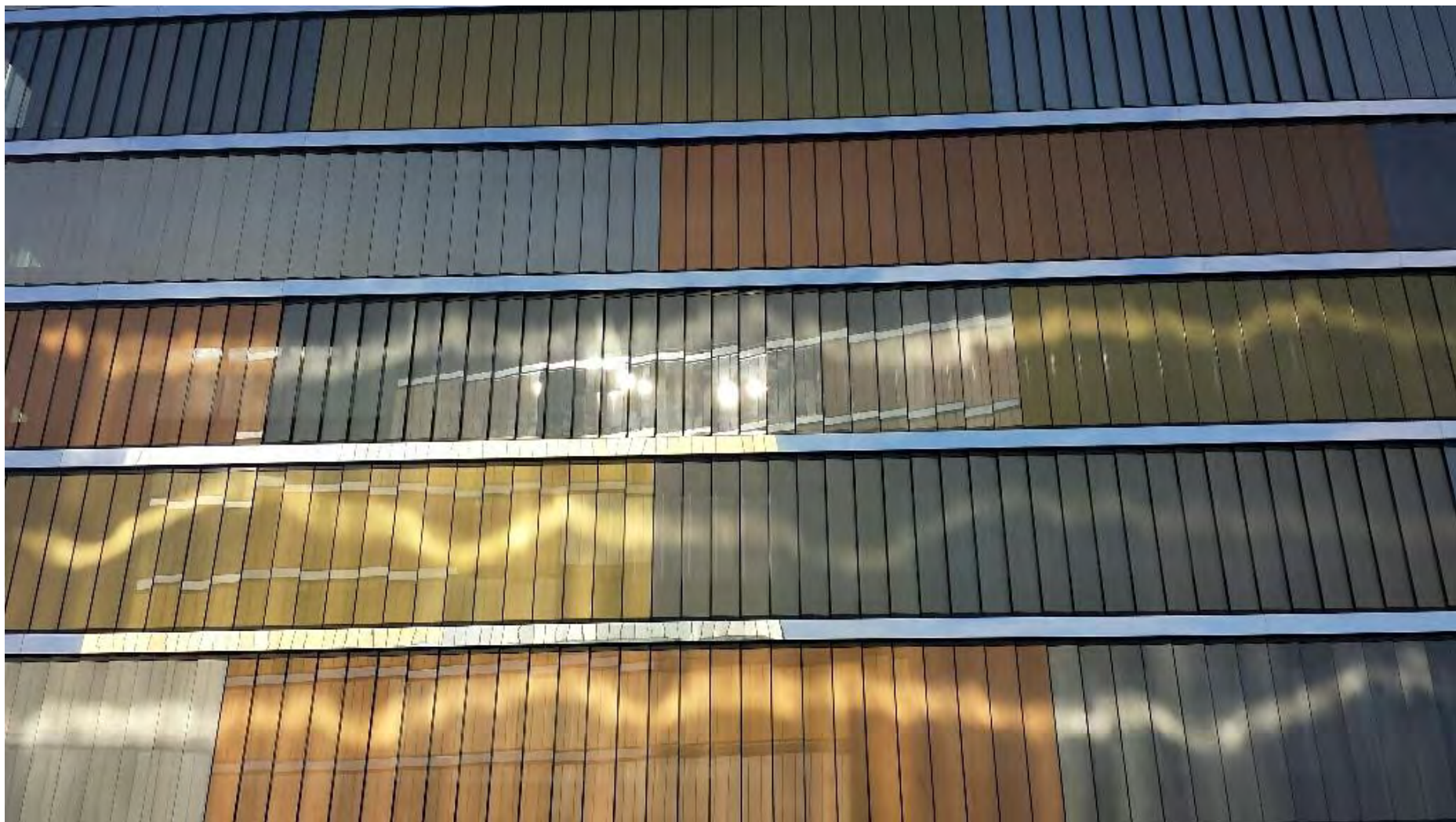


**S E F A R**  
■ ■ ■ ■



# SBB Wankdorf (CH) 2013/14 “Total 9500m2”

**Façade: Lussi + Halter** AL260/25, CR260/25, PR260/25 Copper, Gold, Pearl

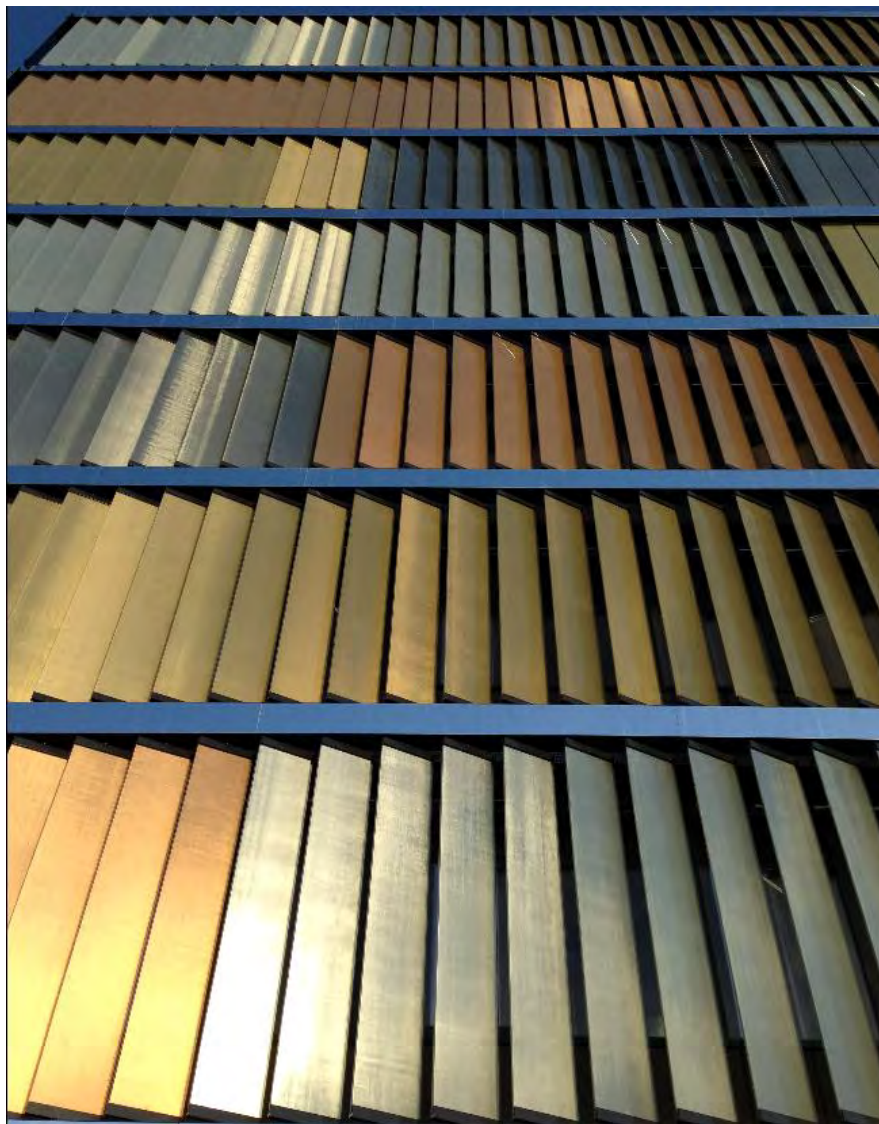


**S E F A R**



# SBB Wankdorf (CH) 2013/14 “Total 9500m2”

**Façade: Lussi + Halter** AL260/25, CR260/25, PR260/25 Copper, Gold, Pearl



**S E F A R**

■ ■ ■ ■



# Pâtisserie Kleinheubach (DE) 2012

*IGU “Moirée+Sunblock” 350m<sup>2</sup>*



**S E F A R**



# Prime Tower “The Clouds” Zurich (CH) 2011

*Interior ceiling*



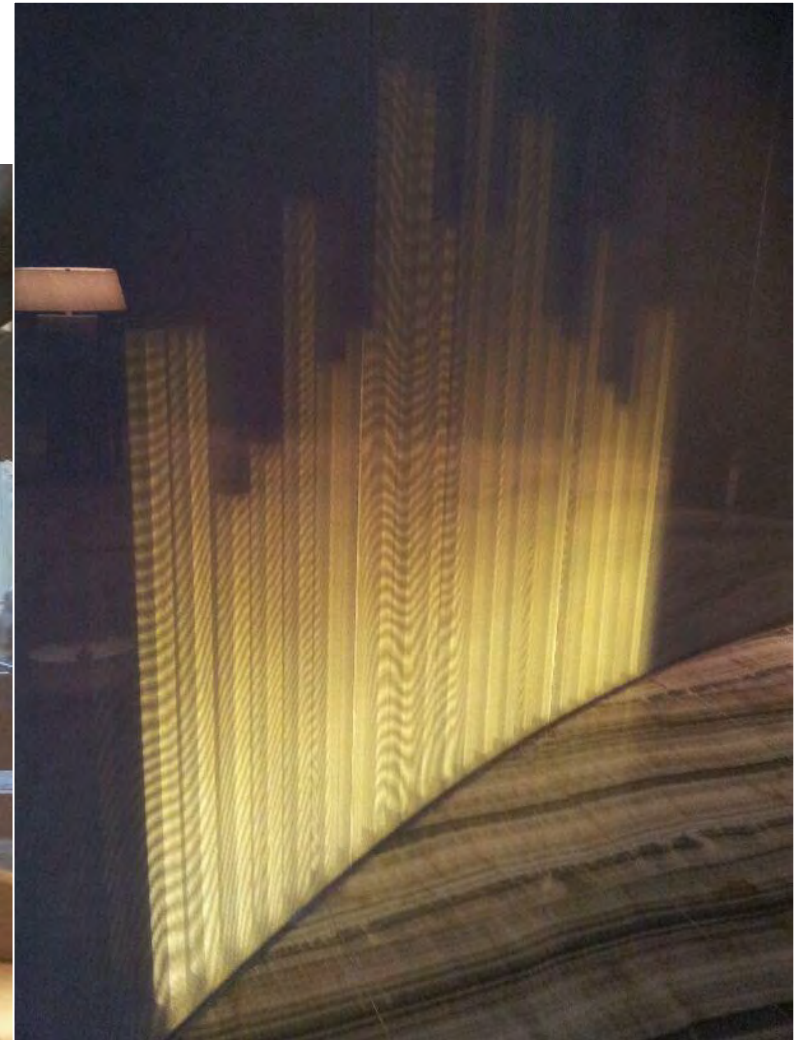
**S E F A R**

■ ■ ■ ■



# Hotel in Milano (IT) 2012

## *Interior*



**S E F A R**  
■ ■ ■ ■

# Calvin Klein (global)

## *Retail*



**S E F A R**





# BVLGARI (global)

## *Retail*



**S E F A R**

■ ■ ■ ■

# BVLGARI (global)

## *Retail*



**S E F A R**  
■ ■ ■ ■



# Beyman Istanbul (TR) 2013

*Retail*



**S E F A R**



# Furniture applications (global)

## *Retail*



**S E F A R**  
■ ■ ■ ■



# IMM Design Köln (DE) 2014

*Lighting application Samuel Wilkinson* AL140/35



**S E F A R**  
■ ■ ■ ■

# IMM Design Köln (DE) 2014

*Lighting application Samuel Wilkinson* AL140/35



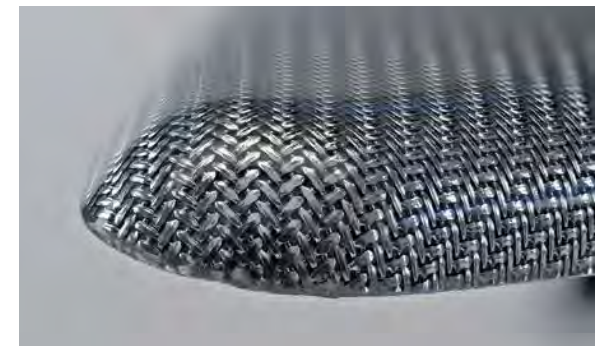
**S E F A R**

■ ■ ■ ■



# Automotive applications (global)

## *Industrial Design*



**S E F A R**

■ ■ ■ ■

# SEFAR® Architecture VISION

## Architectural Glass & Cladding

PO Box 345 Banora Point NSW 2486

Phone: +61 (0)404 835 263

Email: [brad@agcproducts.com.au](mailto:brad@agcproducts.com.au)

[www.agcproducts.com.au](http://www.agcproducts.com.au)

architectural pty ltd  
glass & cladding

